



MapToLearn

Creating student success, one map at a time

Newsletter - Vol. 2, No. 2, February 8, 2018

---

## **Using ArcGIS Online to Support Student Success In Kindergarten and Grade 1 Social Studies**

There are several outcomes in the Manitoba Education Social Studies Curriculum for which the ArcGIS Online Mapping tool would support student learning.



In Kindergarten and Grade 1, students are asked to explore their community and the communities around them in the world. Students will use maps and other resources as they discover the stories of communities and enhance their understanding of the diversity of our world.

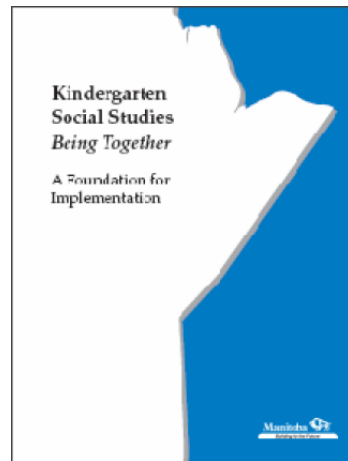
To consider how ArcGIS online can support student learning, outcomes from the [Manitoba Education Social Studies Curriculums](#) are noted and followed by mapping suggestions or resources that could be used.

Curriculum outcomes for grades 2 to 12 will be covered in future newsletters.

---

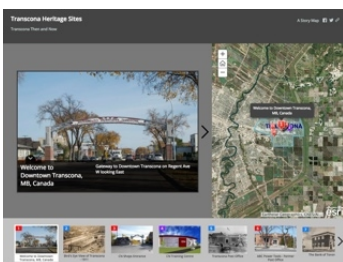
### **Kindergarten**

- Recognize that they live in a country called Canada.
- Describe the location of their home in relation to familiar landmarks.
- Identify familiar places and landmarks.



Use the Living Atlas - World Countries as an interactive map showing the location and size of Canada within the context of the world. ([Map](#))

Use the ArcGIS online mapping tool to create as a class, a map of the school and playground and/or the local neighbourhood. (Sample [Map](#))



Create a StoryMap (MapTour) of familiar neighbourhood places and landmarks.

Students with the teacher and adults tour the local neighbourhood, taking photos that can then be used by the teacher to create a Map Tour StoryMap. (Sample [StoryMap](#))

---

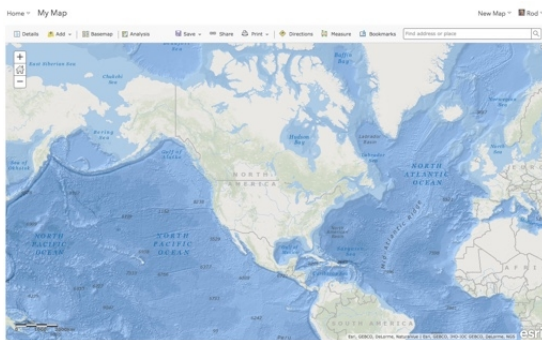
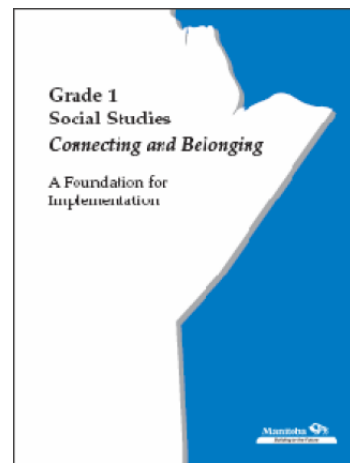
## Grade 1

- Recognize globes, maps, and models as representations of actual places.
- Identify Manitoba as their province and Canada as their country.
- Distinguish land and water masses on globes and maps.
- Identify and locate landmarks and

significant places using relative terms.  
Examples: the statue is in the park beside  
the river...

- Identify local Aboriginal landmarks and significant places.
- Identify local francophone landmarks and significant places.

In addition to the suggestions and resources noted previously, teachers and students can use the following layers from the Living Atlas to both locate provinces and oceans as well as create student or class maps on which to add their learning.



Use the base map – Oceans and add the Living Atlas layer Major Ocean Currents. ([Map](#))



Add the Living Atlas - Provinces and Territories of Canada. Then change the style to show each province and territory in a different colour. ([Map](#))

---

## Previous Newsletters

Did you miss one? You can find them on our blog at: <http://maptolearn.ca/blog/>.



Best regards!

**Pat Adams**, Curriculum Consultant

✉ [padams@maptolearn.ca](mailto:padams@maptolearn.ca)

**MapToLearn**

SHARE

TWEET

FORWARD

lite